

Statistic Module - Accessory to TRAM-QA

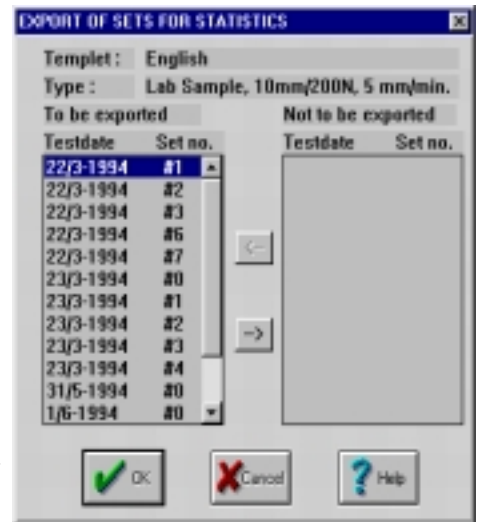
Module Statistique - Accessoires pour TRAM-QA

Statistisches Modul - Zubehör für TRAM-QA

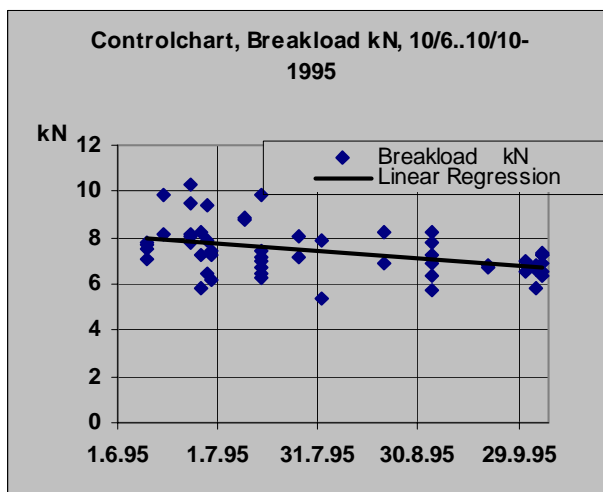
The **Statistic Module** adds to the possibilities for statistical analysis already present in **TRAM-QA**. This optional **Statistic Module** offers added advantages such as easy creation of **Control Charts** (i.e. Performance/time diagrams), **Distribution Charts** etc.

The **Statistic Module** offers an easy-to-use environment:

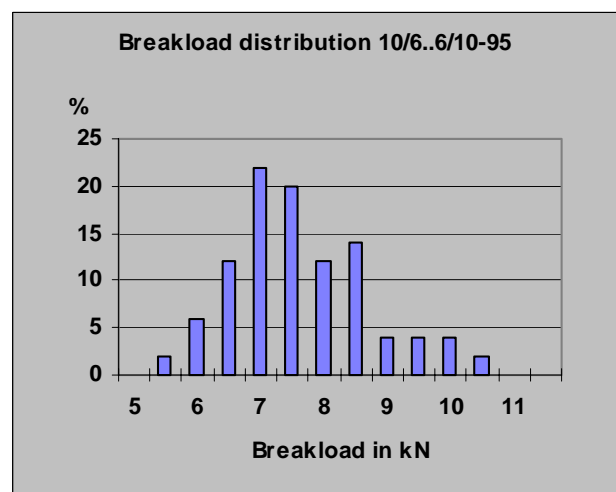
- ✓ It is fast to select data for statistic charting - from the Log (built-in calendar in TRAM-QA).
- ✓ Several selection criteria are available in the TRAM-QA Log - such as:
 - Type (test-type)
 - Test date range and day-in-week,
 - or Production date range and day-in-week
 - Product number range
- ✓ An excellent overview of selected test sets - with a browser to preview each set, and the possibility to remove individual sets from the selection.
- ✓ Create Control charts etc. from your favourite Spreadsheet, e.g. Microsoft Excel. The selected sets are combined in one large file in a format, which can be read by virtually any spreadsheet program. The layout of the file follows the template from the selected sets, with 3 additional columns for production date, test date and product name.
- ✓ For automatic charting (control charts, distribution charts etc.) for all tested and calculated properties a demo macro is available.



Control Chart (example)



Distribution Chart (example)



TRAM A/S
 Dinesensvej 20
 DK-9000 Aalborg, Denmark
 Phone: +45 98120499
 Fax: +45 98132755
 E-mail: tram@email.dk
 Homepage: www.tram.dk